

7 Strategic Steps To Start Your Organisation's AI Journey

For years I subscribed to the maxim "Learning before technology".

It makes sense. Education is about learning and any educational technology worth its salt should support learning. But what do we do when the technology is so far advanced that it changes how we learn?

We have to start taking the technology more seriously.

The attitude of "Learning before technology" has mainly served to keep transformative technology in a box. Its wings have been clipped. We've become masters of making technology "support the way we've always done it".

The artificial intelligence we will encounter in the coming months and years won't be obedient. It will change the world around us and if we aren't proactive it will make the education system irrelevant. We're going to have to take risks.

Why must we adapt?

1. Preparation of students for their future careers

As we prepare our students for future success, we must equip them with the skills and knowledge they need in a rapidly evolving digital landscape. AI offers a multitude of avenues to enhance learning, from personalised

education to smart content creation. Students exposed to AI technology will gain a competitive edge and essential digital literacy.

2. Equipping educators with the best tools

AI can provide staff with powerful tools to enhance their teaching methodologies and administrative efficiency. This will allow educators to focus on the core of their work: teaching and mentoring. Advanced AI tools can also provide personalised insights into student performance, enabling educators to cater to individual learning needs effectively.

3. Staying relevant as an educational provider

In an era defined by technological innovation, educational institutions that fail to adapt will be left behind. Embracing AI in education is not about replacing human interaction, but about augmenting human potential. An AI strategy can facilitate the transformation of learning environments, making them more engaging, inclusive, and effective, ultimately ensuring schools stay at the forefront of education.

Hold On Tight

The progress of artificial intelligence will move at a fast rate.

Tools like ChatGPT and Google Bard are currently providing educators with some of the most powerful technology ever created, yet Greg Brockman, the co-founder of OpenAI, recently stated that “a year from now we'll look back fondly on the AI that exists today as quaint & antiquated”.

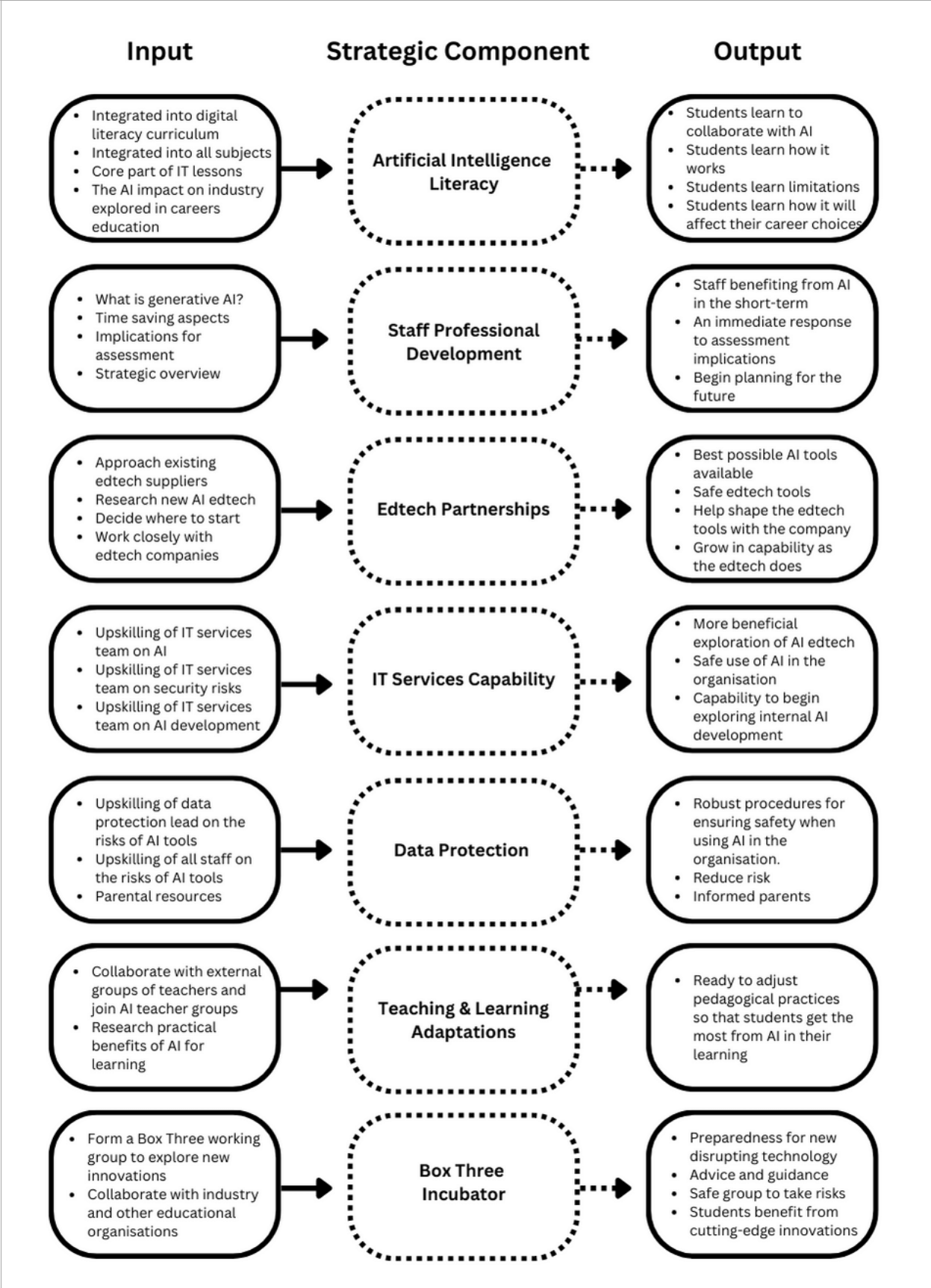
It is impossible for most educational organisations to move at the same pace as tech industries. It is also extremely difficult for most educational organisations to dedicate resources, such as staffing, time and budget, to this type of activity. However, even in light of these realities, we need to do what we can to innovate and move forward. We might not be able to move

at pace on our own, but we can progress steadily and in collaboration with external partners.

In order to pursue non-linear Box Three innovations we will need to set our focus on long-term goals (more on this next week). [Click here to find out more about Box Three Innovations.](#)

There are immediate short-term goals we can explore and implement.

Short Term (3-6 months) AI Strategic Overview



To access an editable version of the strategic plan above click join the [new #AlinEdu Twitter Community](#) and you'll find the link in the pinned tweet.